

# TestCASE

Test Automation Software

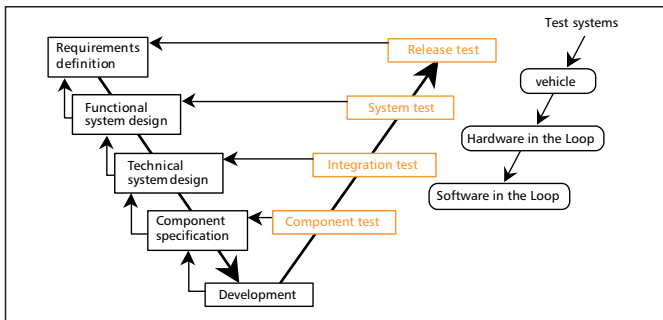
## Systematic & Automated ECU Software Tests

For systematic ECU tests, a wide range of tools is required in all ECU development phases. This not only means considerable investment in tools, but also the problem of deciding which test methodology is the right one:

- How can these tools be used together in a test?
- How can existing tests be re-used?
- How can test tools be exchanged while retaining existing test scripts?
- How can regression tests be carried out?

## Areas of Implementation and Applications

TestCASE is a test automation tool as well as a tool for validating embedded systems in the automotive area. TestCASE is used to design, realize, run and evaluate tests, as well as create intuitive test reports. A wide range of standard interfaces (ODX, FIBEX, ...) to test tools is integrated to cover the entire right-hand branch of the V-model:



## Advantages

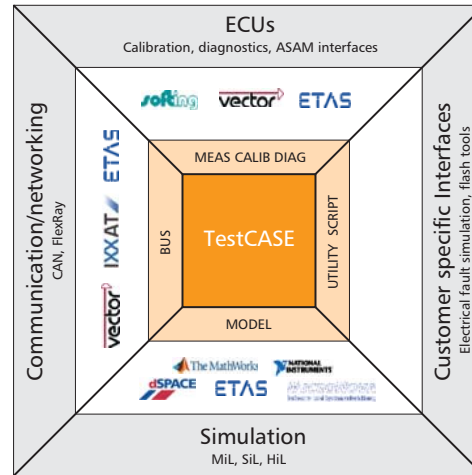
### User Friendliness

The comfortable user interface enables effective and productive testing of ECU software and hardware without necessitating a great deal of familiarization. Additional to controls for developing test cases other plug-ins for tool control and variable mapping are available.

### Reusability

Test cases can be parameterized and structured. Thanks to a generic test description (cross-mapping concept), the test cases generated are virtually independent of the specific test environment hardware/software and can thus be reused extensively.

## Data Sheet



TestCASE controls a large number of tools from all kinds of application areas

## Modularity

The client/server solution contained enables interfaces and software tools to be addressed on several test bed systems of a distributed test environment.

## Extendibility

Further automating interfaces can be integrated in TestCASE using plug-ins and python scripts. The creation of plug-ins will be supported by a wizard. TestCASE has a COM interface to enable integration to test management systems, such as Mercury Quality Center.

## An Overview of Features

- Support of almost all test systems
- High reusability of the tests thanks to generic test description
- Intuitive graphic user interface
- Distributed test environments via client/server solution
- Integrated support of version control system Subversion
- Easy to extend for customer-specific requirements
- Uniform and effective automation of the entire test environment

TestCASE bases on work products by TraceTronic GmbH



Softing Automotive Electronics GmbH

Richard-Reitzner-Allee 6  
85540 Haar, Germany

Tel.: +49 89 4 56 56-420

Fax: +49 89 4 56 56-499

info.automotive@softing.com

www.softing.com

Softing North America, Inc.

29 Water Street, Suite 301  
Newburyport, MA 01950  
USA

Tel.: +1 978 499 9650

Fax: +1 978 499 9654

info.usa@softing.com

www.softing.us

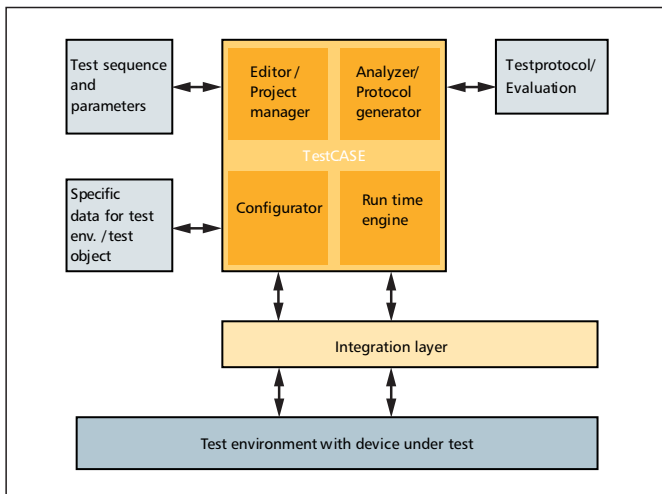
## Data Sheet

### TestCASE: Test Automation Software

## Supported Hardware and Software

- dSPACE ControlDesk
- dSPACE ControlDesk Failure Simulation
- dSPACE Real-Time Interface CAN Multi-Message Blockset
- ETAS LabCar Operator
- ETAS INCA
- ETAS ASCET SD
- Mathworks MATLAB/Simulink
- MicroNova LabVIEW/Simulation Interface Toolkit
- National Instruments LabVIEW
- Softing EDIABAS
- Softing EDICflex
- Softing DTS7
- Vector CANoe/CANalyzer
- Vector CANape

## How it works



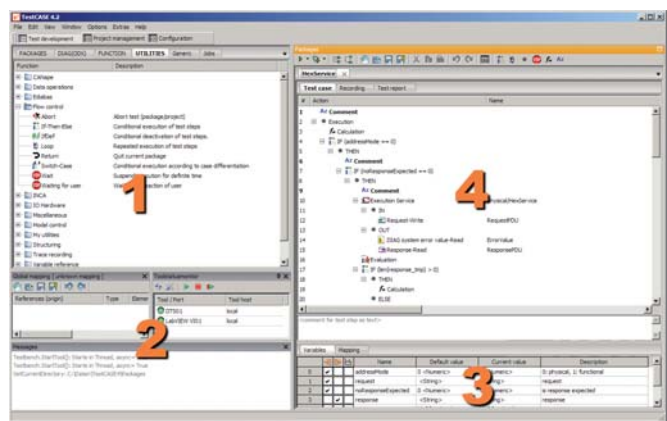
The **Editor** and **Project Manager** are responsible for combining and parameterizing the test cases in a manner.

The **Configurator** is used to select the required settings and data for the test object and test environment. The multi-layer run time engine runs the test; the test data acquired is the basis for the **Protocol Generator** to create the test protocol.

## User Interface

The user interface is clearly divided into the following sections:

- Test step browser ①
- Information and parameterization view ②
- Project management ③
- Test case editor ④



## Services

- Scope of delivery includes standard maintenance and support
- Additionally Softing offers: support on site, training and commissioning services, application support, resident engineering, adapting to new tools, complete ECU tests and integration into the customer-specific process chain.

## Versions and Order Numbers

### Order Code: TestCASE-FV

Complete package consisting of configuration, script editor, run time engine and protocol generator

### Order Code: TestCASE-OV

Consisting of configuration and script editor for independent test case creation

## Prospect

Further features will be available soon:

- UDS test suite
- Test case generator for ODX data

Technical changes reserved © Softing Automotive Electronics GmbH, D\_AE\_35E\_1011 / V1.02  
Non-binding character of the information and reservation of the right of modification: the features described in this product information do not represent any pledged features in a legal sense. The information contained herein may be out-of-date, incorrect or incomplete. All details are thus subject to change and non-binding.